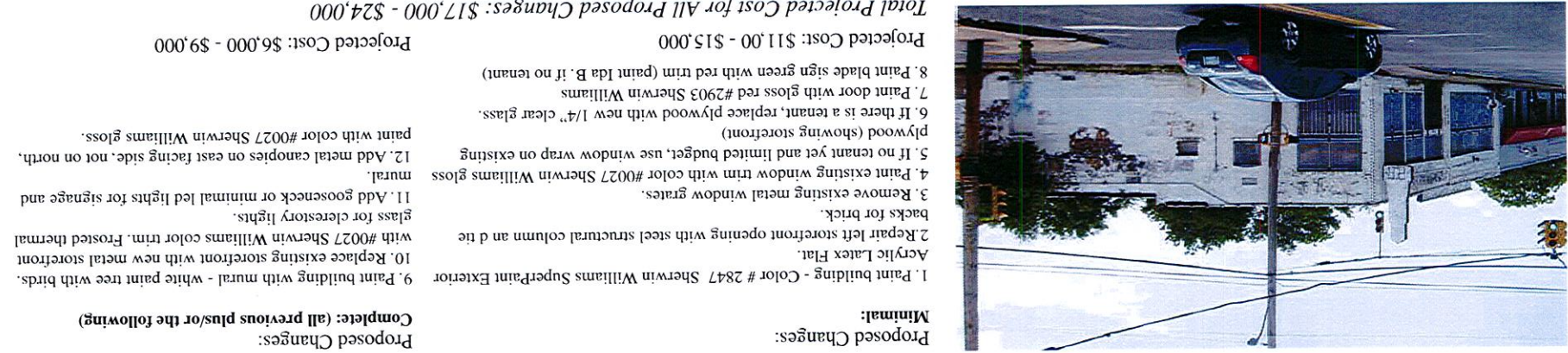


1011 MISSISSIPPI BLVD

MEMPHIS TN



\* The above illustration is a conceptual artist rendering and not intended to serve as an architectural design. This cost projection is intended to provide a rough estimate for an exterior improvement budget for 1011 Mississippi. Projections do not include: architectural, engineering, permitting, interior electrical, mechanical, HVAC, roofing, structural or site work. Note: additional design, architectural and engineering services should be completed prior to implementation of the above concept plan. Actual costs may be significantly higher or lower depending on labor and materials.



Proposed Changes:

Minimal:

1. Paint building - Color # 2847 Sherwin Williams SuperPaint Exterior Acrylic Latex Flat.
2. Repair left storefront opening with steel structural column and tie backs for brick.
3. Remove existing metal window grates.
4. Paint existing window trim with color #0027 Sherwin Williams gloss plywood (showing storefront)
5. If no tenant yet and limited budget, use window wrap on existing
6. If there is a tenant, replace plywood with new 1/4" clear glass.
7. Paint door with gloss red #2903 Sherwin Williams
8. Paint blade sign green with red trim (paint Ida B. if no tenant)

Projected Cost: \$11,000 - \$15,000

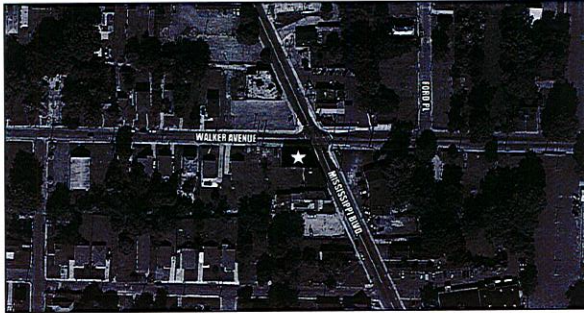
Total Projected Cost for All Proposed Changes: \$17,000 - \$24,000

Projected Cost: \$6,000 - \$9,000

Proposed Changes:

Complete: (all previous plus/or the following)

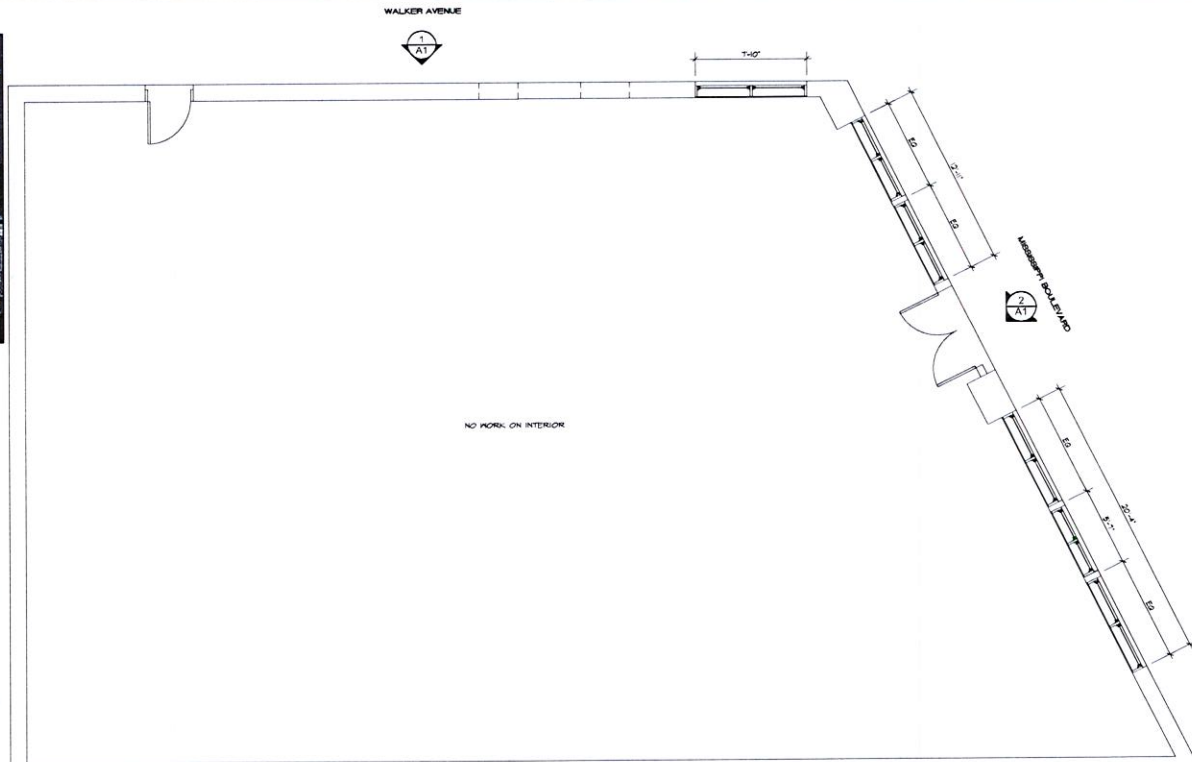
9. Paint building with mural - white paint tree with birds.
10. Replace existing storefront with new metal storefront with #0027 Sherwin Williams color trim. Frosted thermal glass for clerestory lights.
11. Add gooseneck or minimal led lights for signage and mural.
12. Add metal canopies on east facing side, not on north, paint with color #0027 Sherwin Williams gloss.



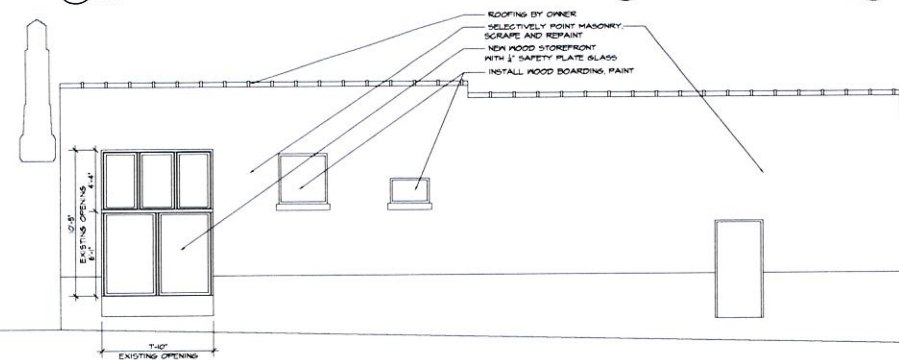
5 VICINITY MAP  
A1 NTS



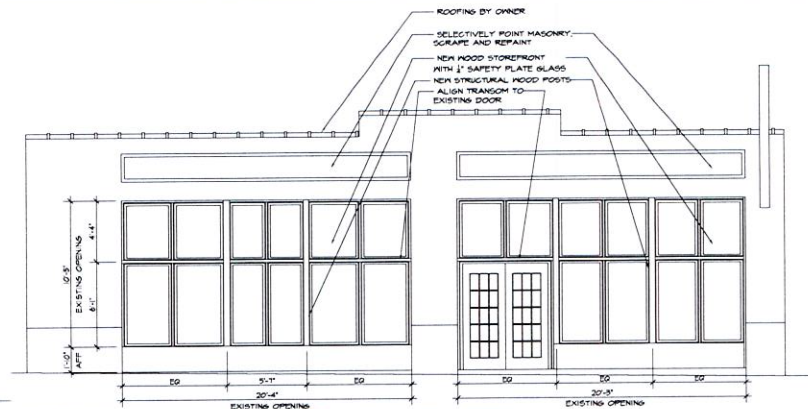
4 EXISTING PHOTO  
A1 NTS



3 FLOOR PLAN  
A1 1/4" = 1'-0"



1 WALKER ELEVATION  
A1 1/4" = 1'-0"



2 MISSISSIPPI BLVD ELEVATION  
A1 1/4" = 1'-0"

DO NOT SCALE DRAWINGS. SHEETS MAY BE DISTORTED BY THE REPRODUCTION PROCESS. USE PROVIDED DIMENSIONS AND NOTES ONLY. IF NOT SHOWN, REQUEST CLARIFICATION FROM THE ARCHITECT. CONTRACTOR SHALL VERIFY ALL DIMENSIONS AND CONDITIONS IN FIELD.

NOT FOR REGULATORY APPROVAL, PERMITTING, OR CONSTRUCTION

ISSUE DATE  
mm/dd/yyyy

REVISIONS

△	
△	
△	
△	

ALL DRAWINGS AND NOTED MATERIALS APPLICABLE UNLESS OTHERWISE NOTED. ALL WORK TO BE DONE IN ACCORDANCE WITH THE CITY OF MEMPHIS STANDARDS FOR CONSTRUCTION WITHOUT VARIATION UNLESS OTHERWISE NOTED BY THE ARCHITECT.

CONSULTANTS:  
CIVIL  
STRUCTURAL  
MECHANICAL  
PLUMBING  
ELECTRICAL

ARCHITECTURE, INCORPORATED  
MEMPHIS, TENNESSEE  
REGISTERED ARCHITECTS  
EXTERIOR ELEVATIONS  
FLOOR PLAN

PROGRESS PRINT 06/24/14

MISSISSIPPI AND WALKER FACADE  
1011 MISSISSIPPI BLVD  
MEMPHIS, TENNESSEE

KEY PLAN

ARCHITECT'S JOB NO.  
1324-06

SHEET NO.  
A1